



For Lease

National Health Building

1901 North Highway 360 · Grand Prairie, Texas 75050



- Great Highway Visibility
- 3 Miles from DFW Airport
- Underground Parking
- After-Hours Security Card Access
- On-Site Health Club
- Local and Responsive Management
- Meeting Facility and Luncheon Room



Total Square Footage:
102,495 square feet

Available Space:
10,715 square feet

Typical Floor Size:
17,082 square feet

Floors:
6

Closest Intersection:
North Highway 360 & Fountain/Burney Rd



Agent to Contact:

Beaux Riley – 817.226.0000
beaux@scmrealestate.com

Metro 817.226.0000
scmrealestate.com

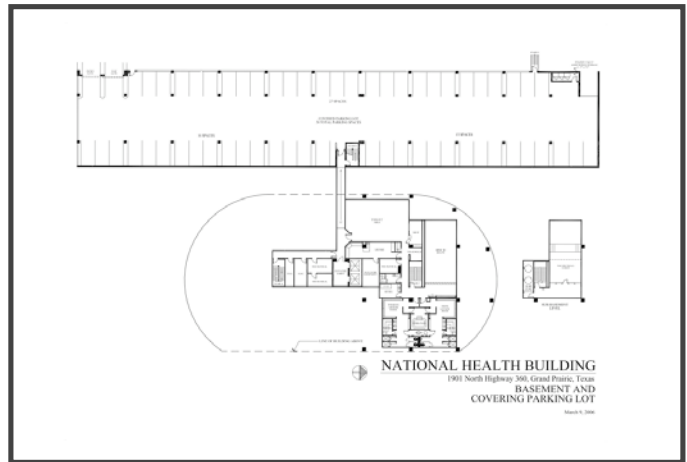
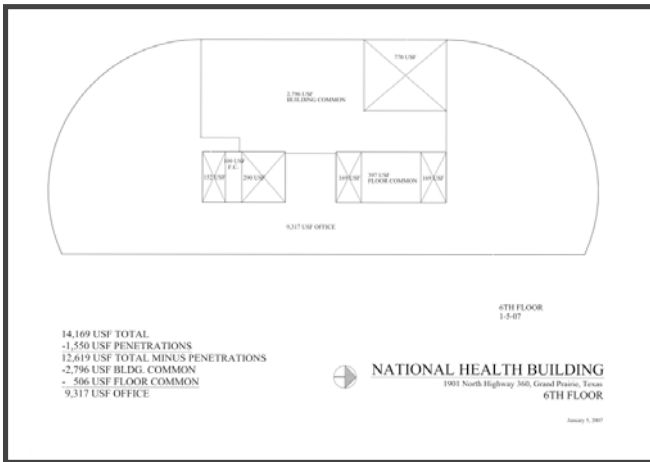
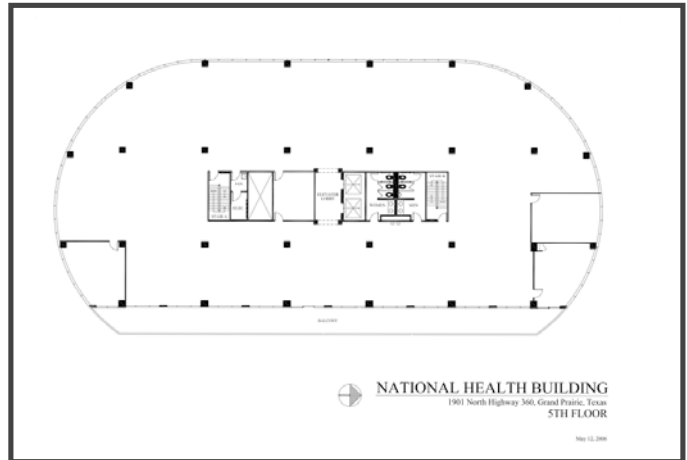
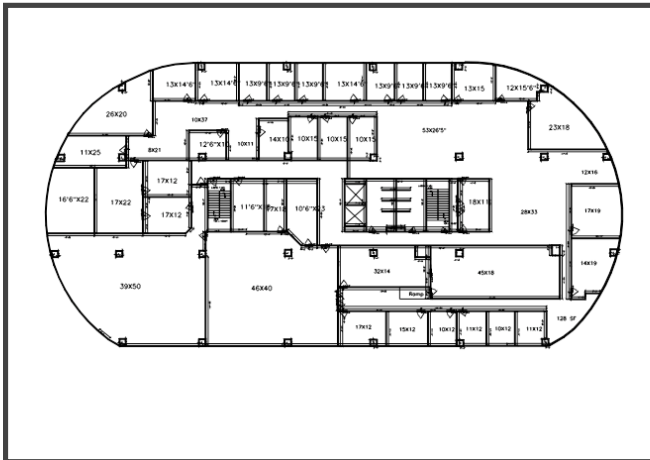
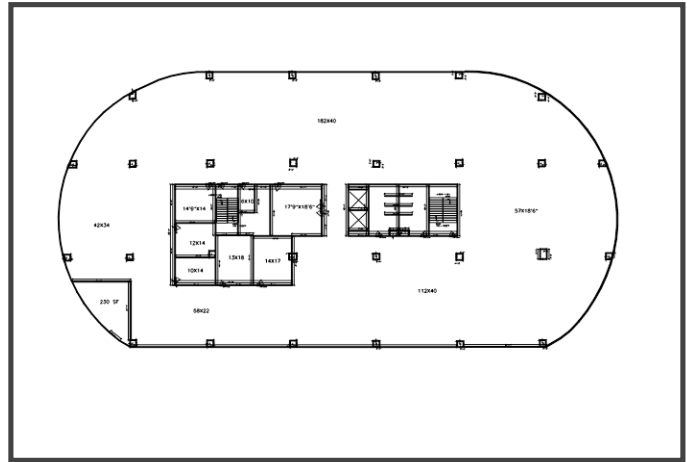
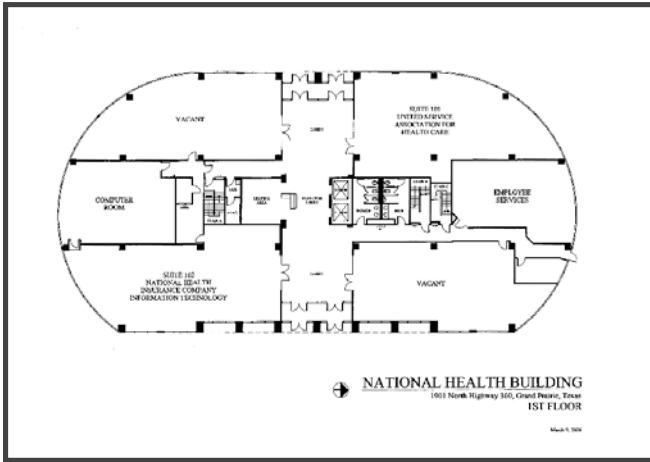




For Lease

National Health Building

1901 North Highway 360 · Grand Prairie, Texas 75050



14,169 USF TOTAL
-1,550 USF PENETRATIONS
12,619 USF TOTAL MINUS PENETRATIONS
-2,796 USF BLDG. COMMON
= 9,823 USF FLOOR COMMON
+ 506 USF FLOOR COMMON
= 10,329 USF OFFICE

Metro 817.226.0000
scmrealestate.com

SCM does not guarantee the accuracy of this information although it has been provided by a reliable source. Please keep in mind that the square footage is an estimate and we are not responsible for any inaccuracy.

